

SEG BACKLIT PARTITION

ASSEMBLY INSTRUCTION



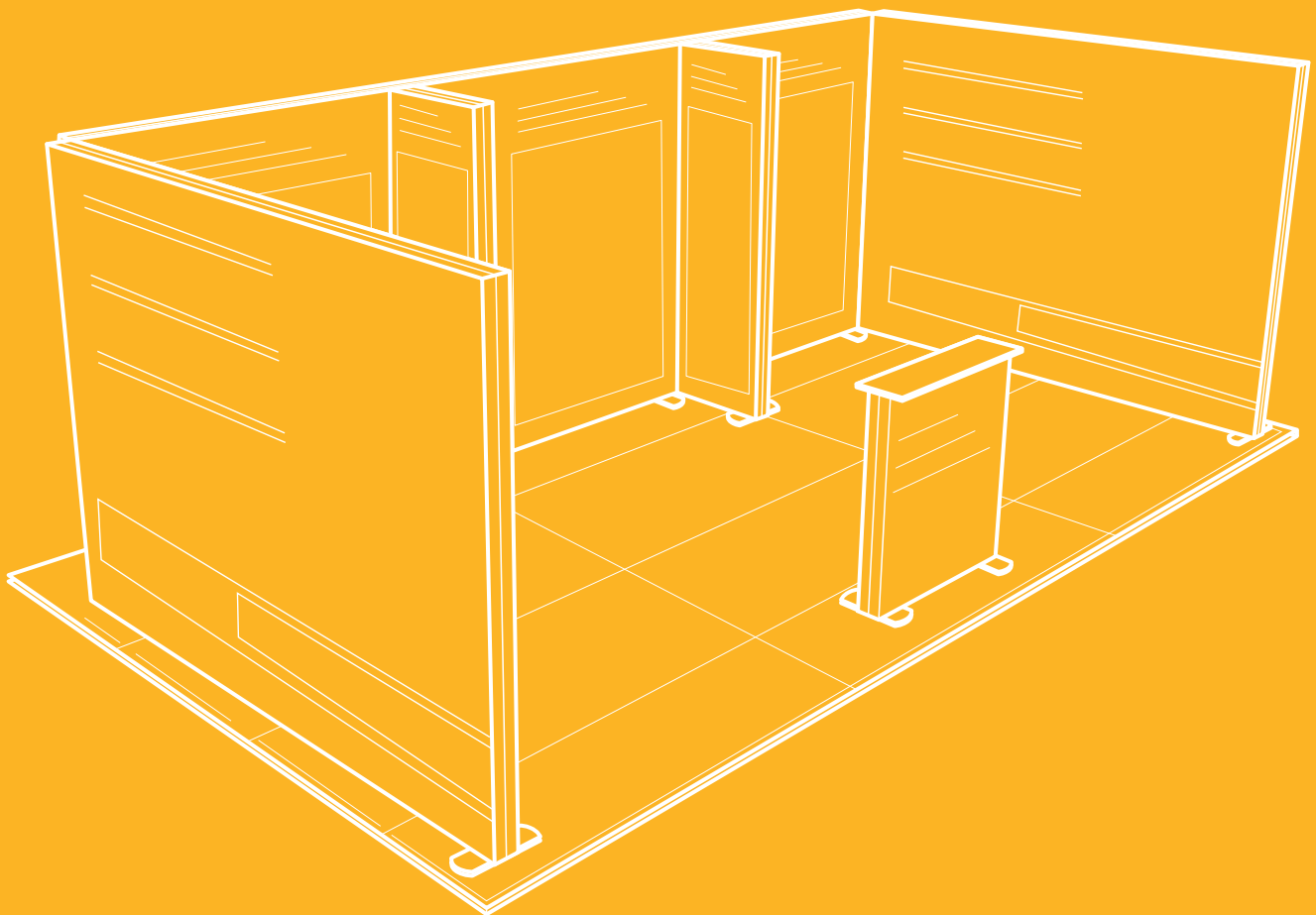
Indoor Display
Solution



User
Friendly



Cutting-Edge
Design



SEG Backlit Partition Connectors

Components.

1

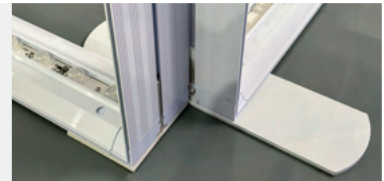
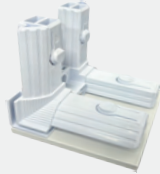
90° Connectors (x2)



Installation Image

2

L-Shaped Base (x1)



Installation Image

3

90° T-Shaped Connector



Installation Image

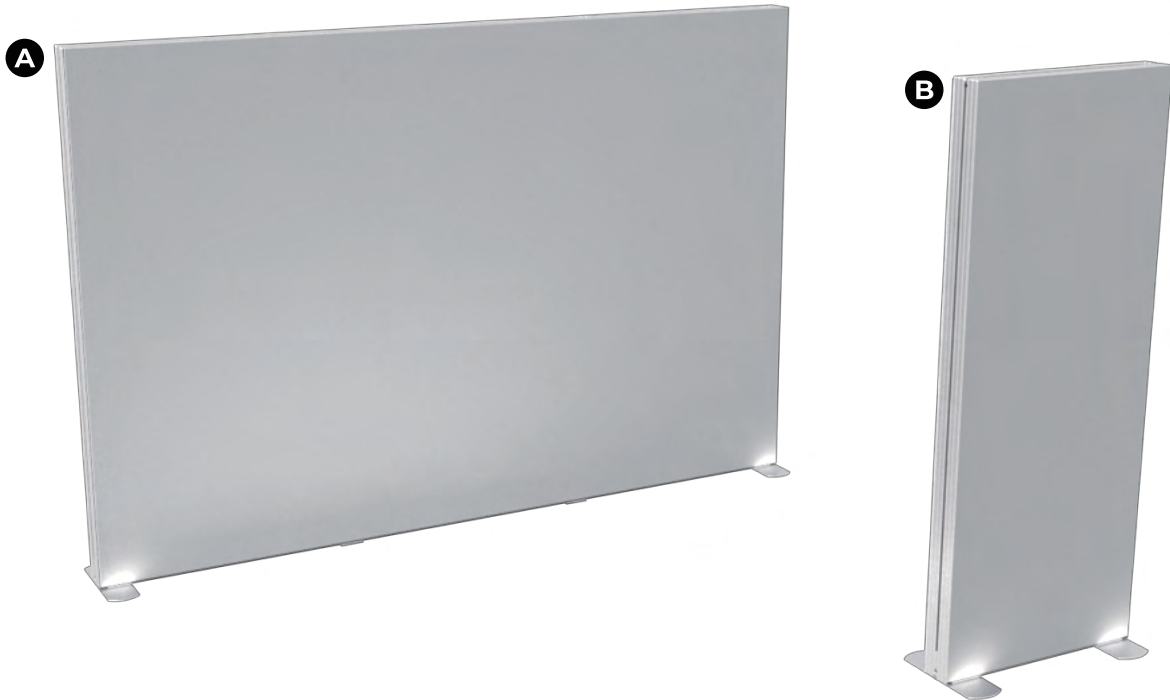
SEG Backlit Corner Partition Assembly Instruction

Applies to: 2.8ft x 8.2ft, 3.3ft x 8.2ft, 10ft x 8.2ft and 20ft x 8.2ft

1.

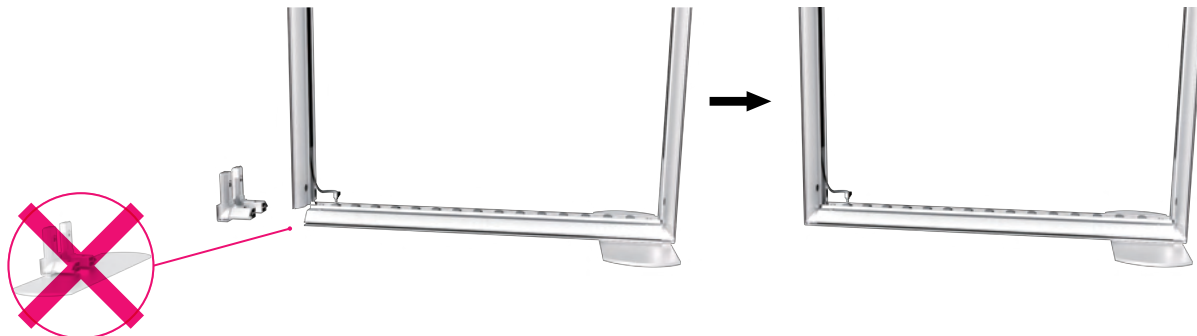
**Arch installation requires 2-3 people. Do not attempt to install it alone.*

Before assembling or installing your Corner Partition, ensure that your **Back Wall (A)**, **Partition Panel (B)**, and all other booth components are fully assembled.



2.

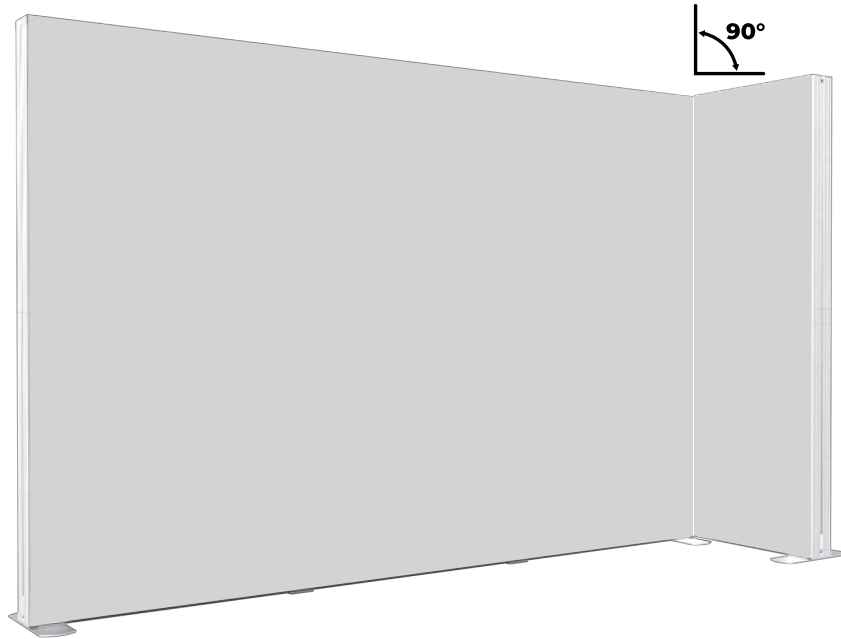
Determine which corner of your back wall and partition will be connected. Then replace one of the corner/feet pieces with the **L-Shaped Base (2)**.



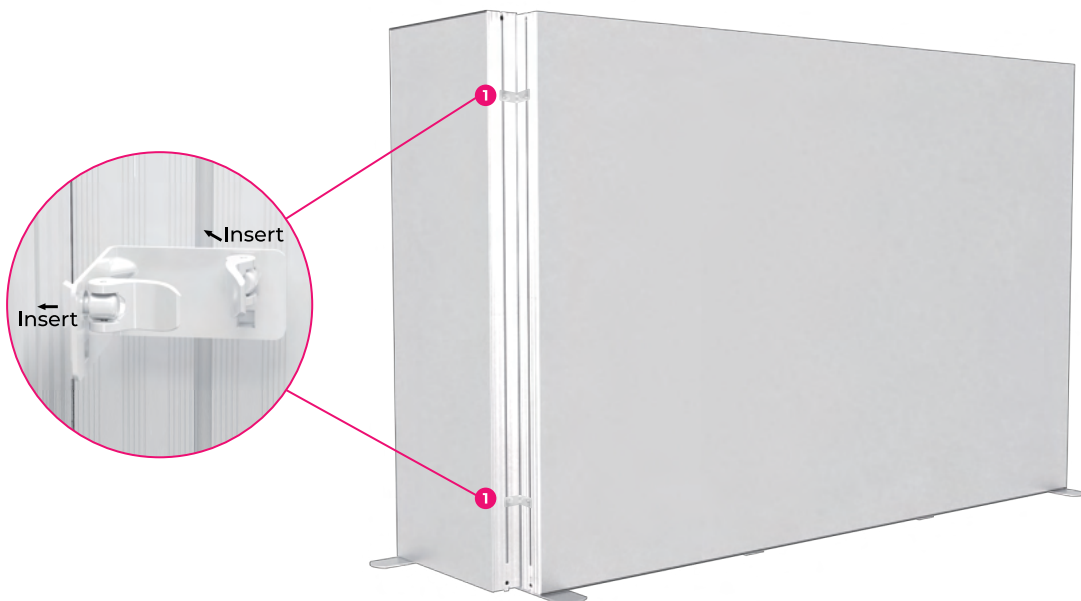
SEG Backlit Corner Partition Assembly Instruction

Applies to: 2.8ft x 8.2ft, 3.3ft x 8.2ft, 10ft x 8.2ft and 20ft x 8.2ft

- 3.** Line up your Partition wall at a 90° angle to your back wall, creating a corner.



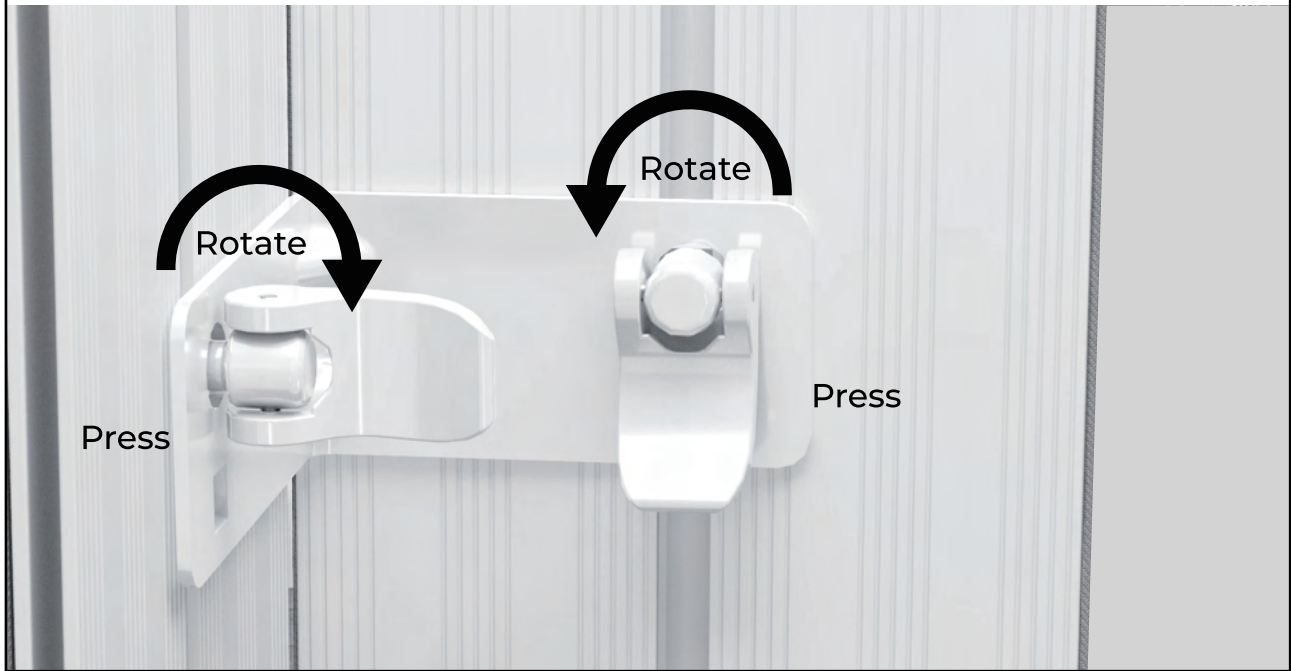
- 5.** Locate your **90° Connectors (1)** and insert 2 of them into the channels along the edges of both back wall and partition.



SEG Backlit Corner Partition Assembly Instruction

Applies to: 2.8ft x 8.2ft, 3.3ft x 8.2ft, 10ft x 8.2ft and 20ft x 8.2ft

- 5.** Once the bracket is in position, carefully rotate the lever to secure the bracket and then press the lever down to lock it in place.



SEG Backlit Middle Partition Assembly Instruction

Applies to: 2.8ft x 8.2ft, 3.3ft x 8.2ft, 10ft x 8.2ft and 20ft x 8.2ft

1.

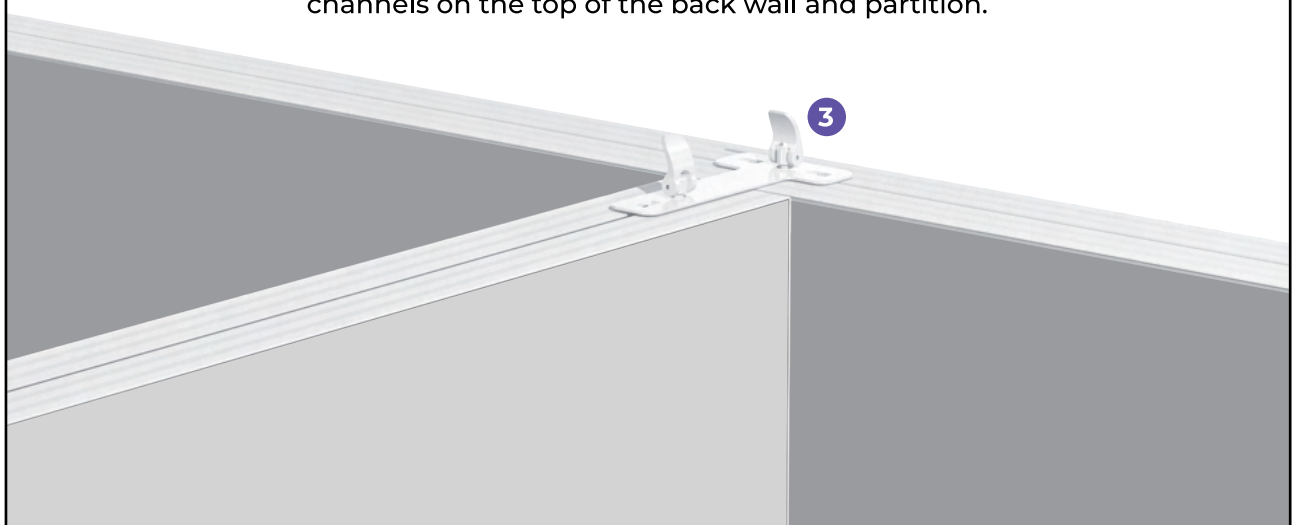
**Arch installation requires 2-3 people. Do not attempt to install it alone.*

Begin with same steps as steps 1-2 of the Corner Partition. Place the partition on top of the archway connector base plate, allowing the pin to insert itself into the L-shaped bracket at the bottom of the backwall.



2.

Locate the archway **T-Shaped Connector (3)** bracket and insert it into the channels on the top of the back wall and partition.



SEG Backlit Middle Partition Assembly Instruction

Applies to: 2.8ft x 8.2ft, 3.3ft x 8.2ft, 10ft x 8.2ft and 20ft x 8.2ft

5.

Once the bracket is in position, carefully rotate the lever to secure the bracket and then press the lever down to lock it in place.

