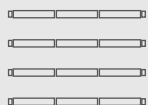


10x20 Trade Show Booth Executive Package

Assembly Instructions



(2) Connector Clamps



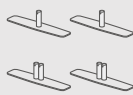
(12) Support Poles



(3) Bottom Corners



(6) Top Corners



(4) Support Feet



(4) Light Clips



(4) LED Lights

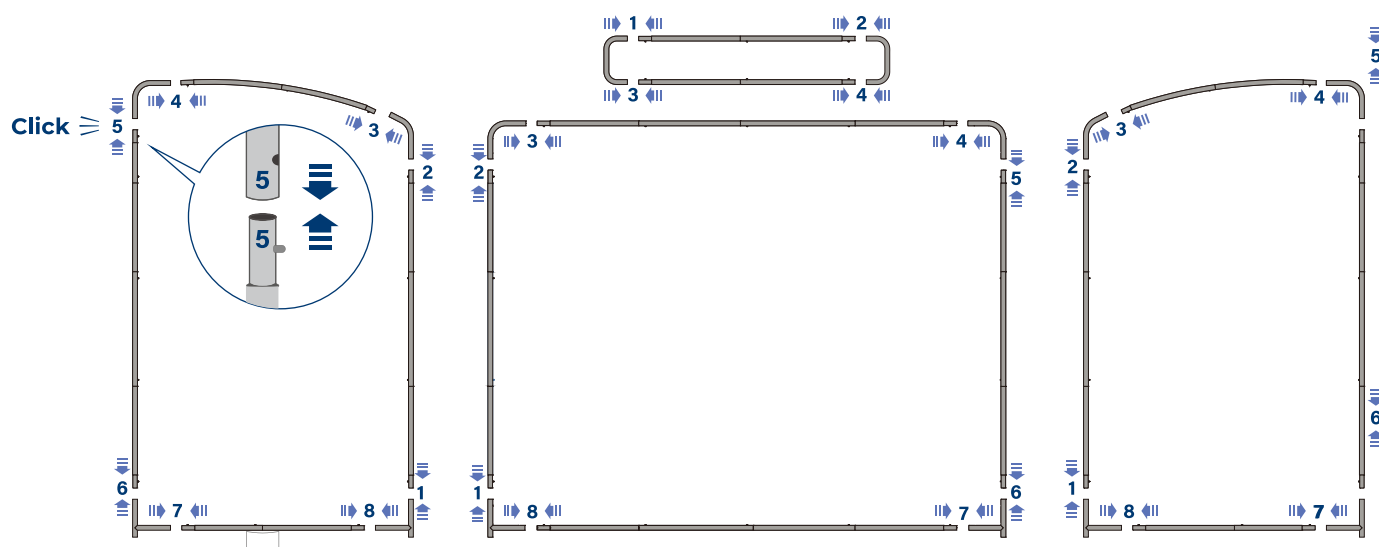


(3) Backdrop Graphic
(Ships Separately)

1

Assemble the Frame

Using the numbers on the frame, connect the poles together.

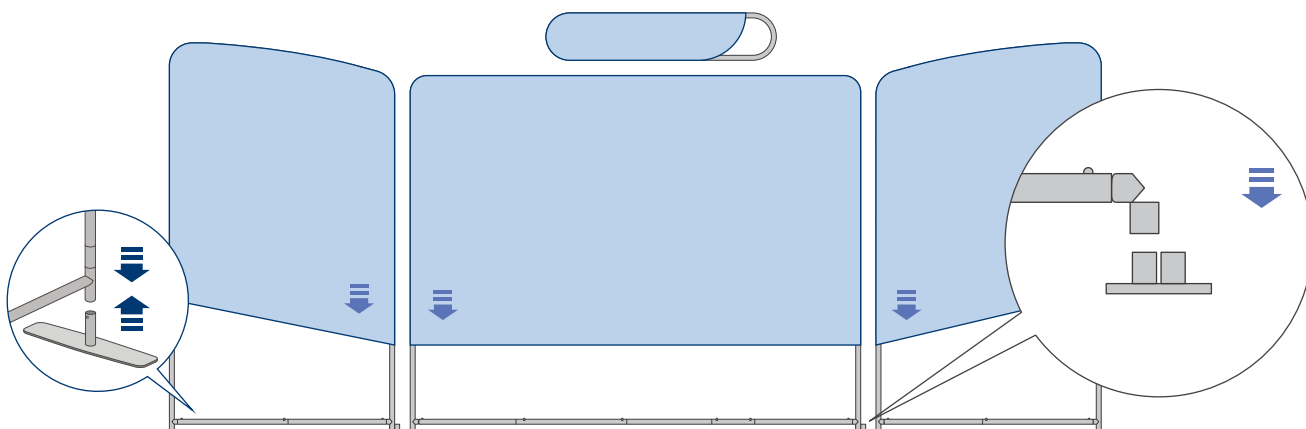


Match numbers 1 to 1, 2 to 2, etc.

2

Install the Graphics and Attach Feet

Carefully pull the graphic print over the frame, ensuring both sides are pulled down at the same time. Attach support feet to the bottom of the frame.



It helps to have a second person to pull the other side simultaneously.

Storage & Care:

Store in a cool dry location. Clean hardware with a damp cloth. Machine wash the graphics in cold water on a gently cycle. Air dry only. Use a steamer for wrinkles. Never dry-clean.

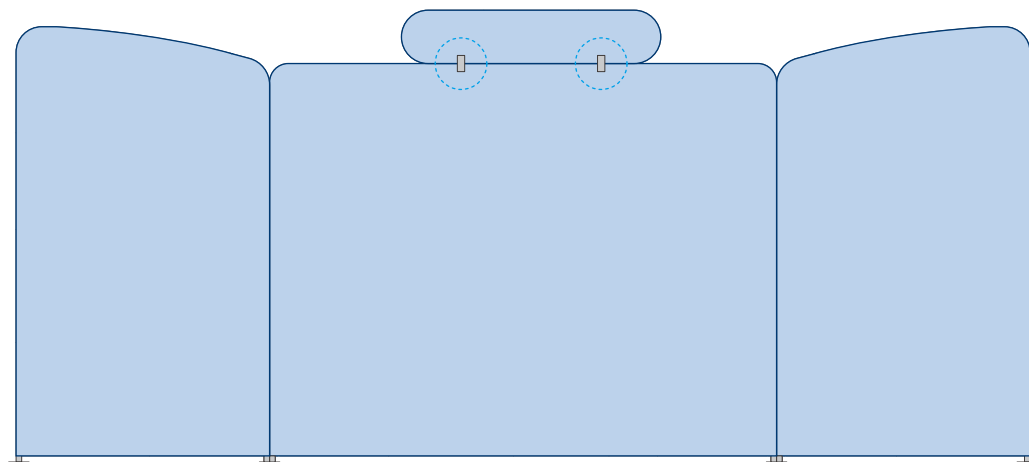
10x20 Trade Show Booth Executive Package

Assembly Instructions

3

Attach Header

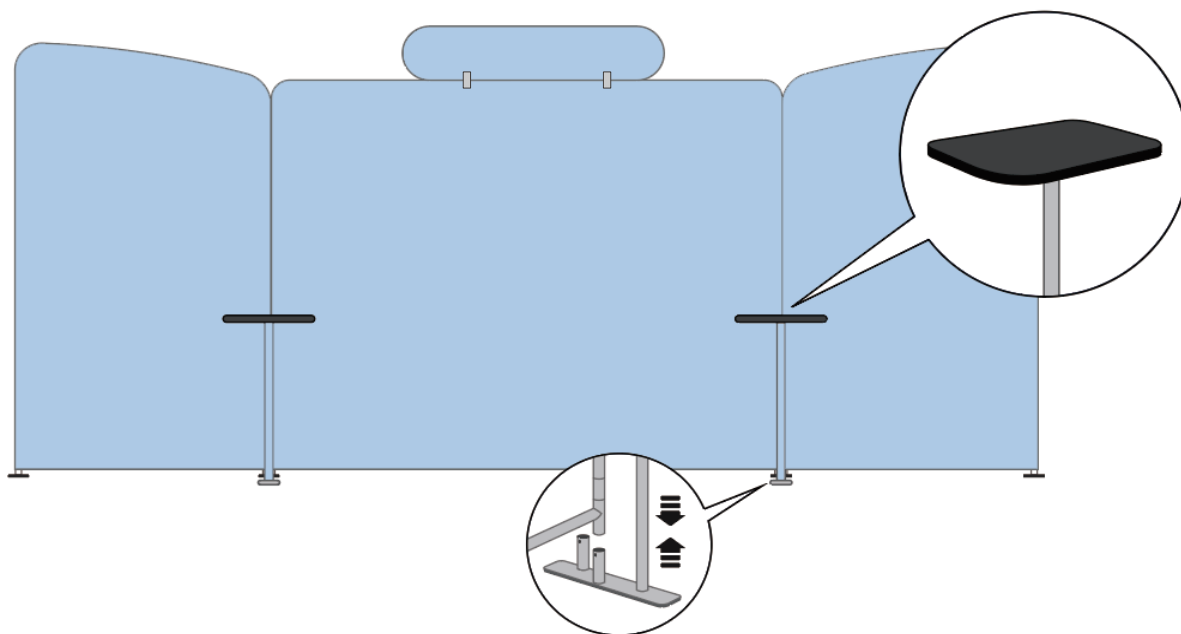
Lean the frame down and attach the top header to the center panel.



4

Install Smart Shelves

Install (2) Smart Shelves Onto The Frames



Storage & Care:

Store in a cool dry location. Clean hardware with a damp cloth. Machine wash the graphics in cold water on a gently cycle. Air dry only. Use a steamer for wrinkles. Never dry-clean.

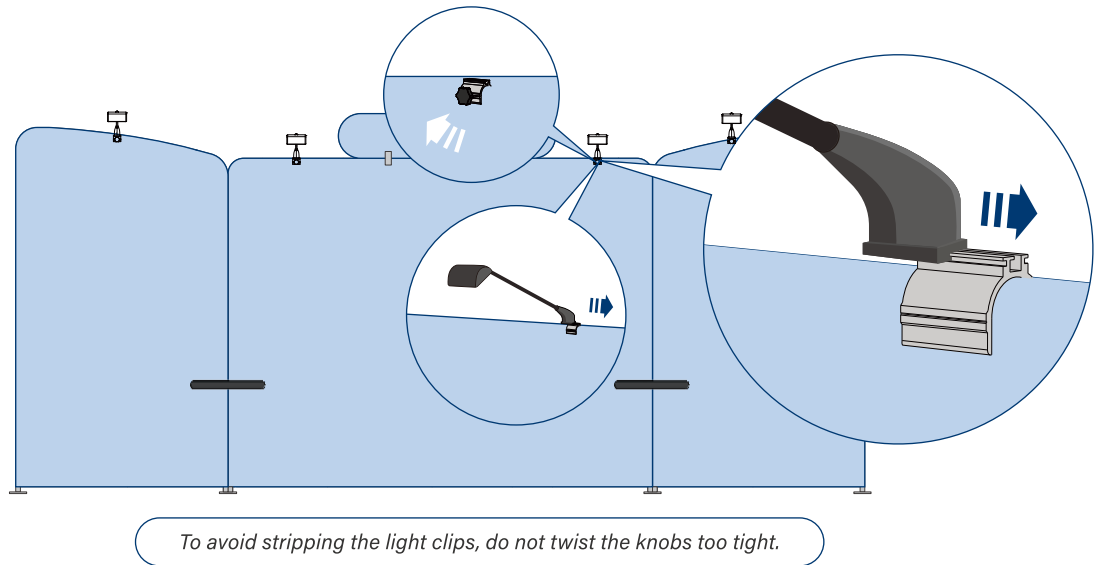
10x20 Trade Show Booth Executive Package

Assembly Instructions

5

Attach LED Lights

Attach light clips to the frame (knobs facing back) and tighten until secure. Slide LED lights into the top grooves.



Storage & Care:

Store in a cool dry location. Clean hardware with a damp cloth. Machine wash the graphics in cold water on a gently cycle. Air dry only. Use a steamer for wrinkles. Never dry-clean.