

# 10FT SEG BACKLIT TRADE SHOW DISPLAY

---

## ASSEMBLY INSTRUCTION



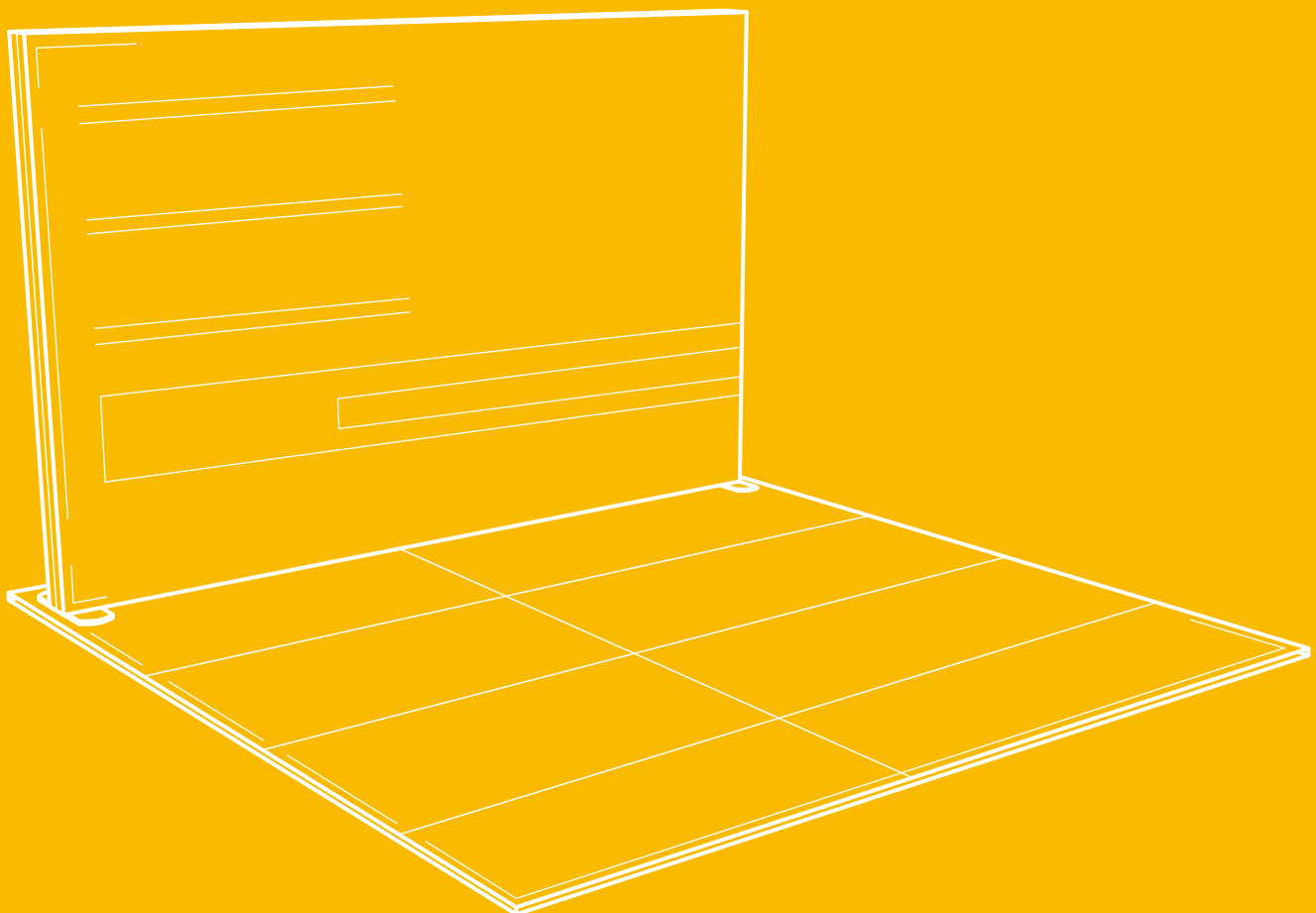
Indoor Display  
Solution



User  
Friendly



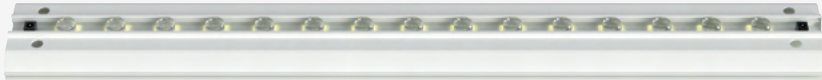
Cutting-Edge  
Design



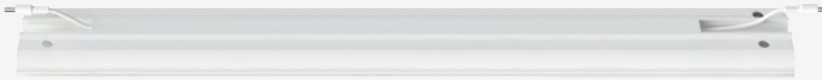
# Components.

---

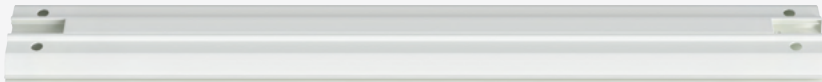
**A** Profile with LED Strip (Top & Bottom) (x6)



**B** Side Profile with Cable (x2)



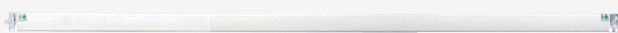
**C** Side Profile without Cable (x2)



**D** Vertical Inner Struts (x4)



**E** Horizontal Inner Struts (x3)



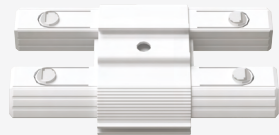
**F** Base Plate (x2)



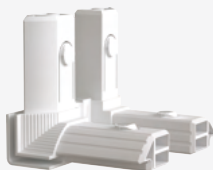
**G** Bottom Connectors (x2)



**H** Top & Side Connectors (x4)



**I** Corner Connectors (x2)



**J** Middle Cross Connectors (x2)



**K** Connecting Cables (x4)



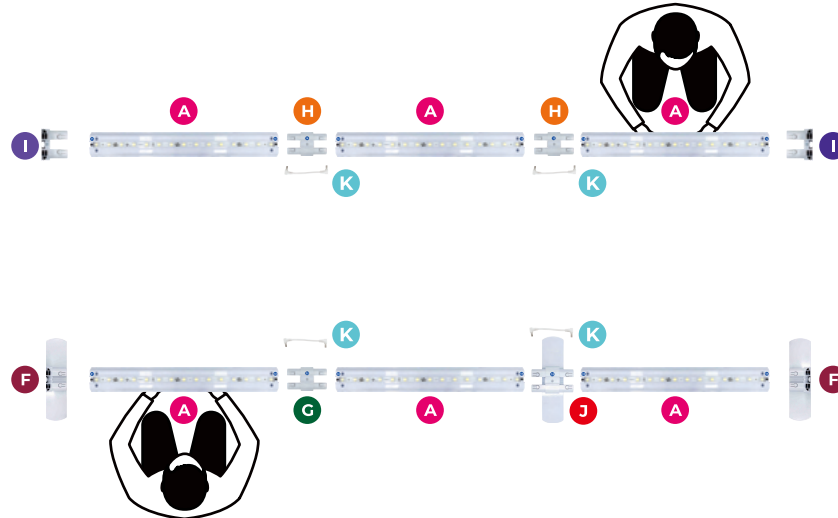
**L** Power Supplies w/ Device Plugin (x2)



# 10ft SEG Backlit Backwall Assembly Instruction

Applies to: 10ft x 8.2ft

- 1.** Begin by laying all of the **Profile pieces w/ LED lights (A)** in 2 rows, sorting them by matching their blue number to the corresponding **Top & Side Connectors (H)**, **Bottom Connectors (G)**, **Base Plate (F)**
- \*All of these pieces will connect to the a part that has a matching blue number*



**A** Profile with LED Strip (Top & Bottom) (x12)



**F** Base Plate (x2)



**G** Bottom Connectors (x3)



**H** Top & Side Connectors (x7)



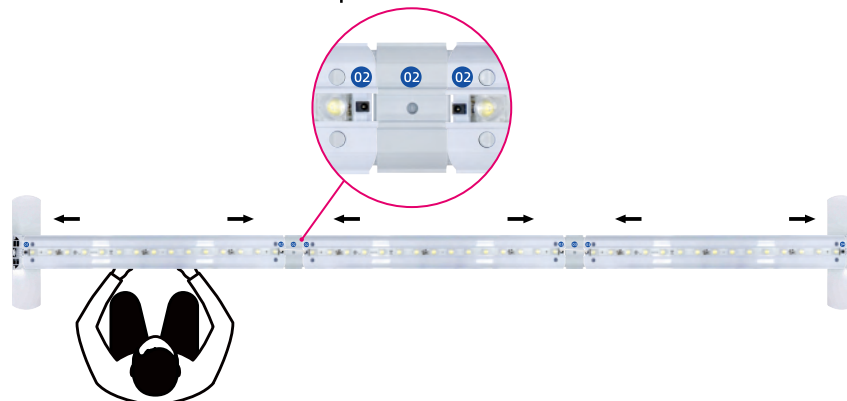
**I** Corner Connectors (x2)



**K** Connecting Cables (x4)



- 2.** Connect all of the parts laid out in step to by pushing them together until the tabs click into place on each of the connectors.

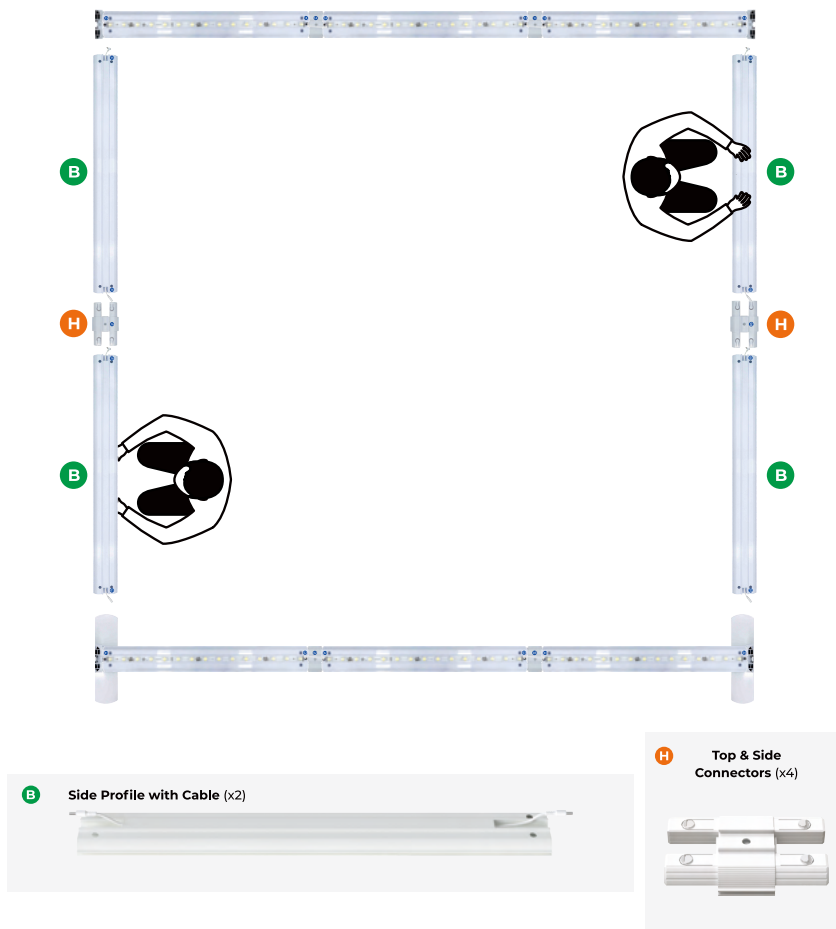


# 10ft SEG Backlit Backwall Assembly Instruction

Applies to: 10ft x 8.2ft

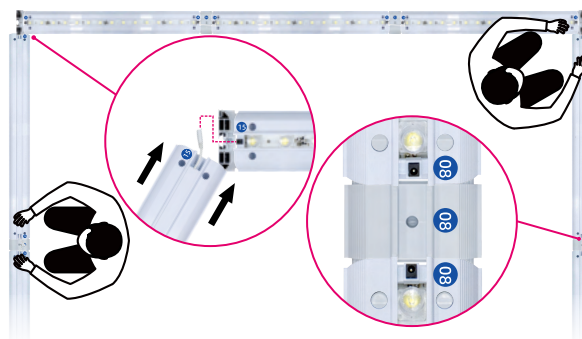
3.

Lay out the remaining **side profiles (B)**, matching their blue numbers to their corresponding **connectors (H)** (as in step 1 and 2)



4.

Connect all of the parts laid out in step 3 to by pushing them together until the tabs click into place on each of the connectors.

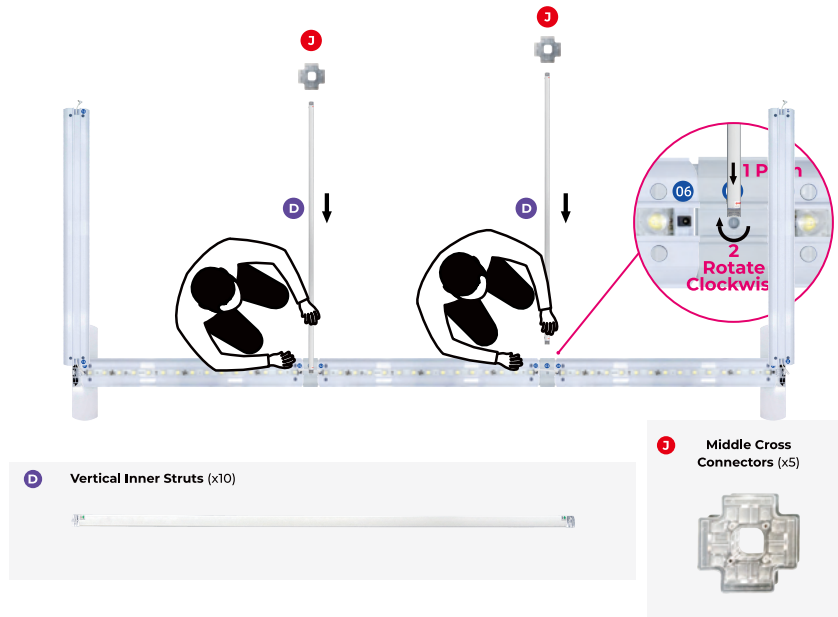




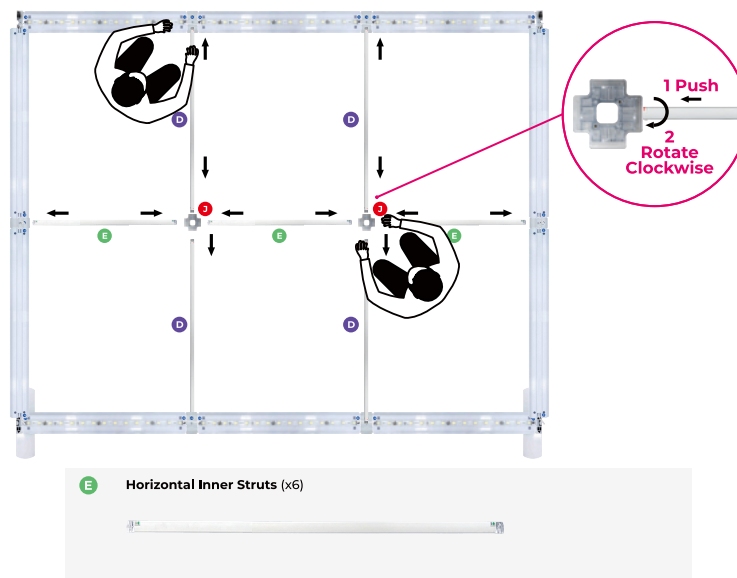
# 10ft SEG Backlit Backwall Assembly Instruction

Applies to: 10ft x 8.2ft

- 5.** Locate 5 of the **Vertical Inner Struts (D)**. Then connect them to the center of each of the **Bottom Connectors (G)** & **Middle Cross Connectors (J)** by pressing them into the small rectangular opening, then rotate clockwise to lock the piece into place.



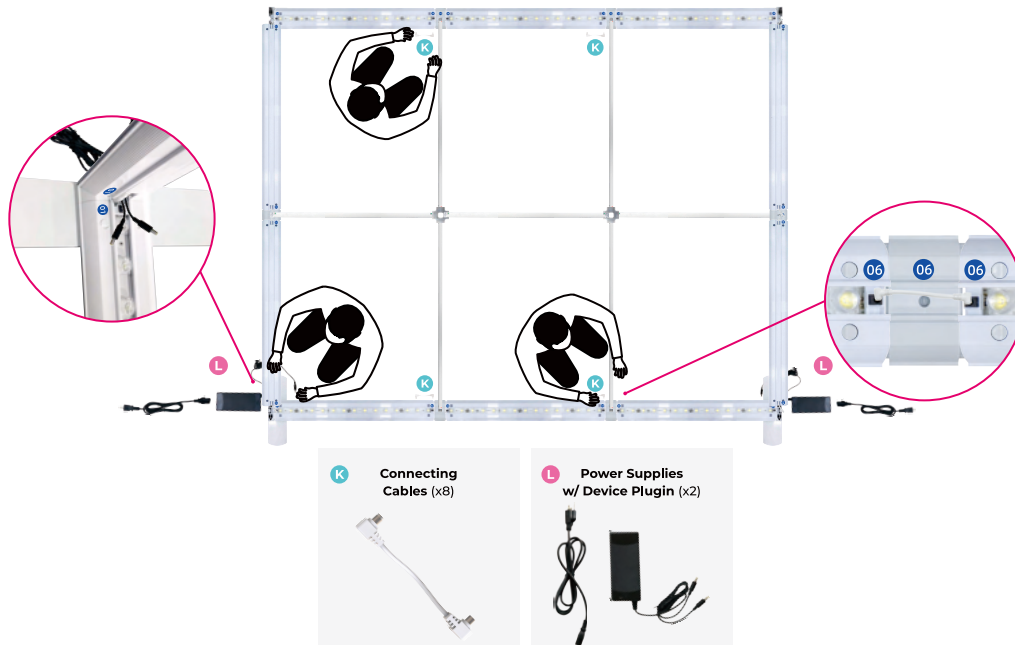
- 6.** Locate the 6 **Horizontal Inner Struts (E)**. Starting from one side of the frame, carefully press the **Horizontal Inner Struts (E)** in between the **Middle Cross Connectors (J)** and the side connector. Then, carefully rotate the **Horizontal Inner Struts (E)** clockwise until the connection is secure. Continue the same process for all additional Inner Struts.



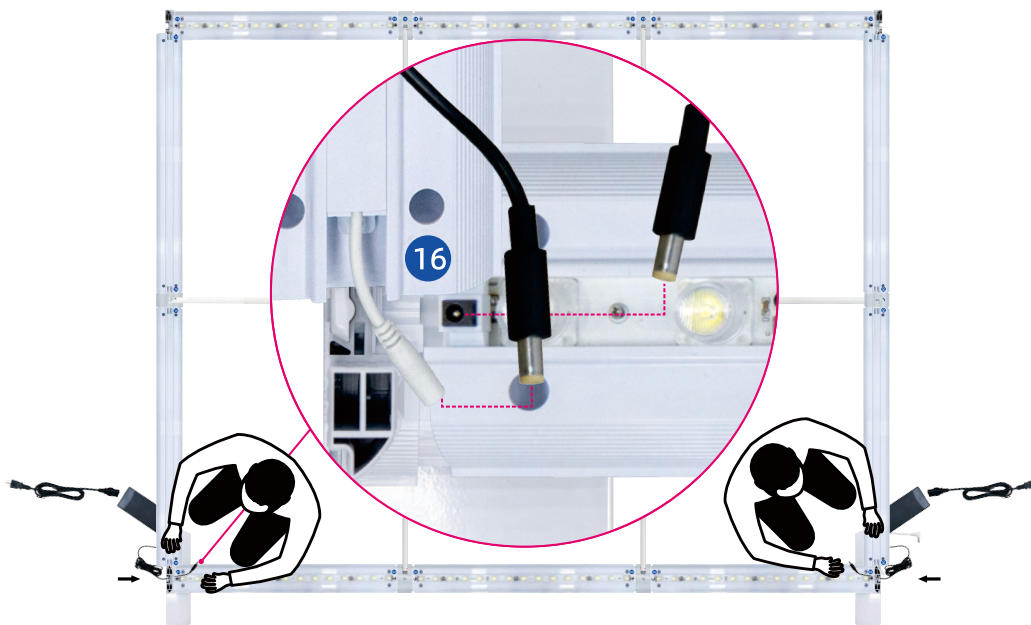
# 10ft SEG Backlit Backwall Assembly Instruction

Applies to: 10ft x 8.2ft

- 7.** Connect each strip together using the white **Connecting Cables (K)**. Locate your **power supplies (L)** and run 2 power cables into the holes on the bottom of each side.



- 8.** Connect one power supply to the two power connections on each side. One will be on the bottom and one will run up the side.

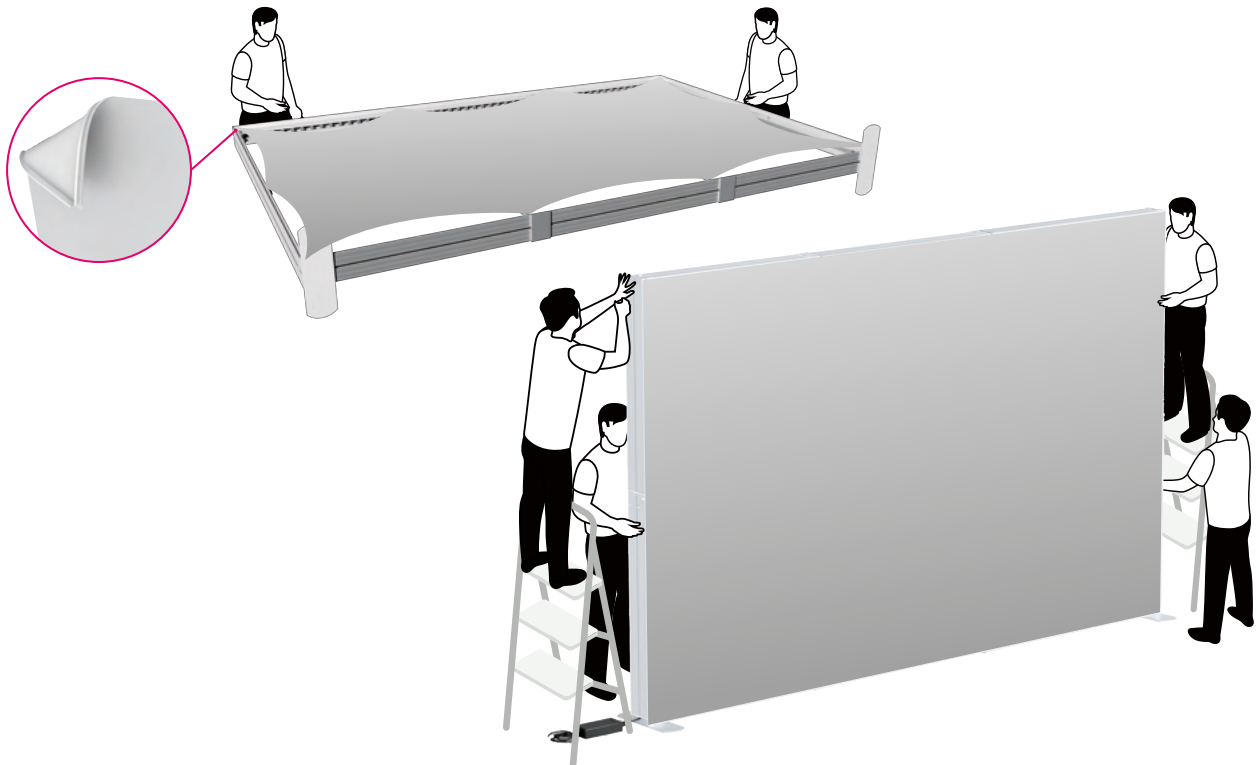


# 10ft SEG Backlit Backwall Assembly Instruction

Applies to: 10ft x 8.2ft

9. Instal graphics by firmly pushing the silicone edge into the channel on the from of the frame. Keep tension on the graphic as you go down each side so there is enough fabric to reach the end. Push the silicone edge of the center of each graphic into the center of the channel, then smooth the the edge into the channel buy sliding a thumb towards the corner. With a partner, pick it up off the ground from each side and carefully lift it onto its feet.

*\*Do not pick up from the middle!*



10. To disassemble, Use the white U-Shaped tool included with your hardware to depress small circles from the lower portion of each side of the display.

